



SCOPE DOCUMENTS

The Contract Documents Issued for (Conceptual Design, Schematic Design, Design Development, Partial Construction Documents or Other Issuance up to Issued for Construction) are intended to be at that level of development and as such, may be neither complete nor coordinated. The (Construction Manager, Contractor, Design/Builder) is responsible for complete and coordinated pricing [and execution] of the Work, and shall include items necessary for the proper execution and completion of the Work, as shown, specified, reasonably inferred or required for a complete Project. For Work of delegated designs, systems, assemblies, components and materials shall comply with national, state and local code requirements. The (Construction Manager, Contractor, Design/Builder) shall inform the Owner and Architect, in timely fashion, of any discovered omissions, inconsistencies or errors in the Contract Documents.

ISSUANCES

No.	Drawing Issue Description	Date



**HOFFMAN TOWN CENTER
BLOCKS 4 AND 5
RETAIL BASE**

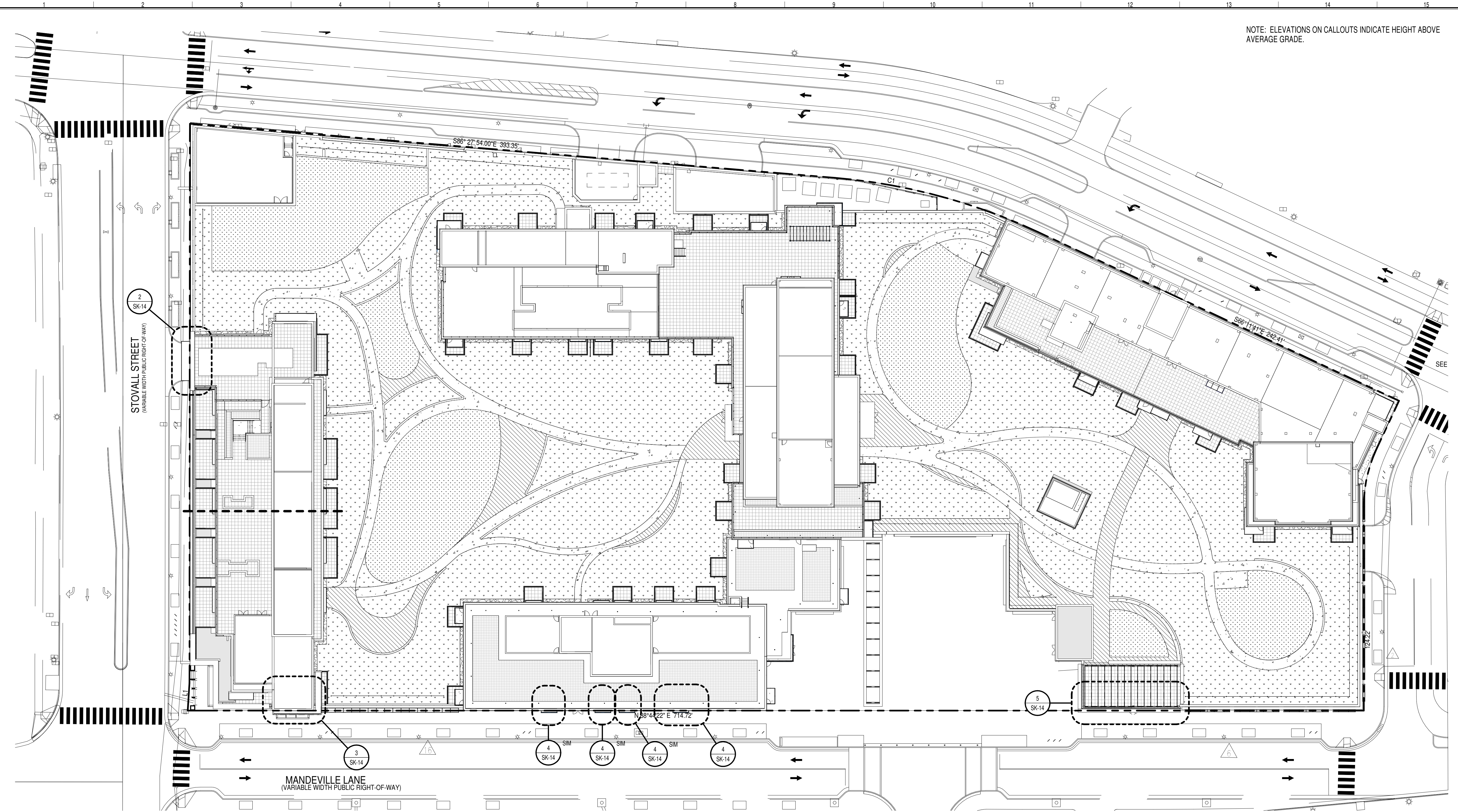
STONEBRIDGE CARRAS

ENCROACHMENTS PLAN

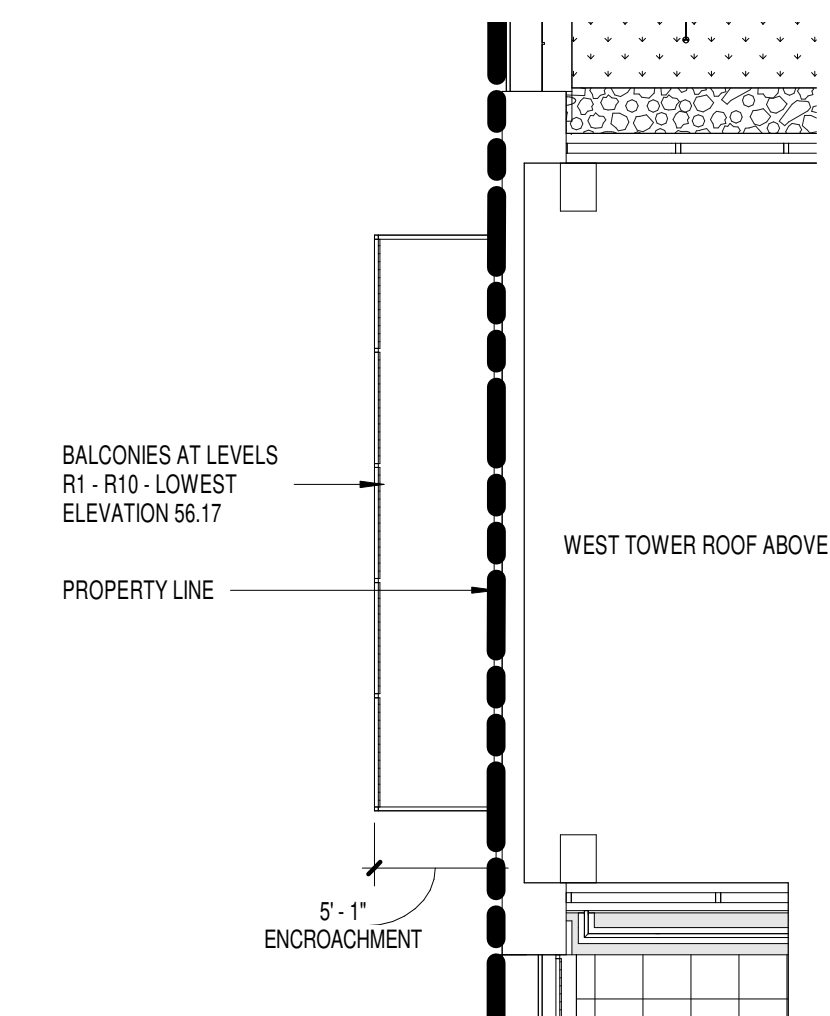
DK	20160037
Principal-in-Charge	Project No.
JG	01/15/19
Project Manager	Date
SJ	
Project Architect	
FR	
Staff Architect	

SK-14

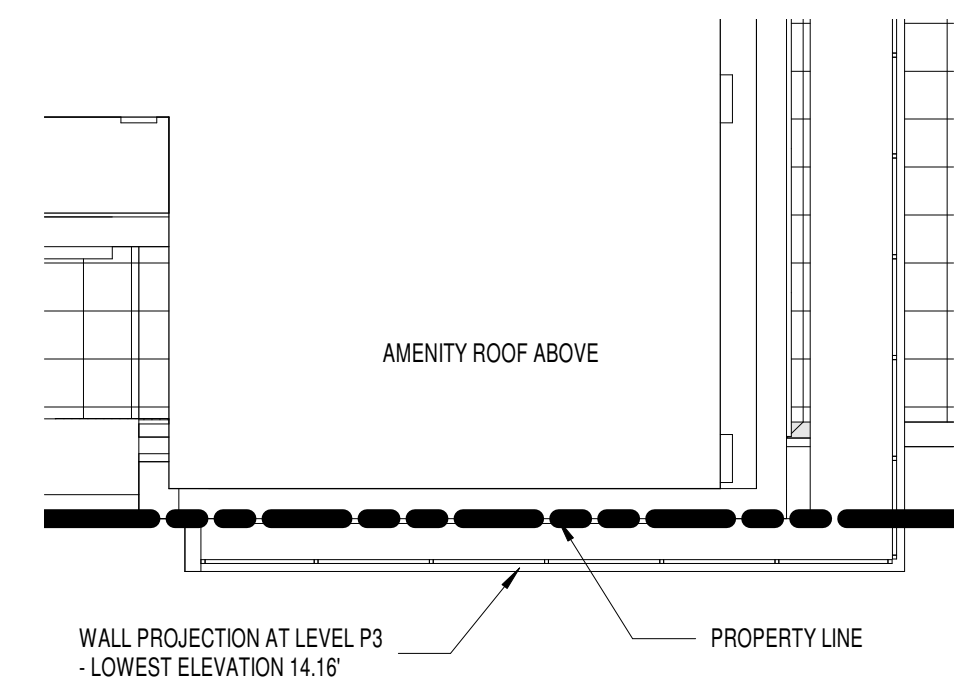
NOTE: ELEVATIONS ON CALLOUTS INDICATE HEIGHT ABOVE AVERAGE GRADE.



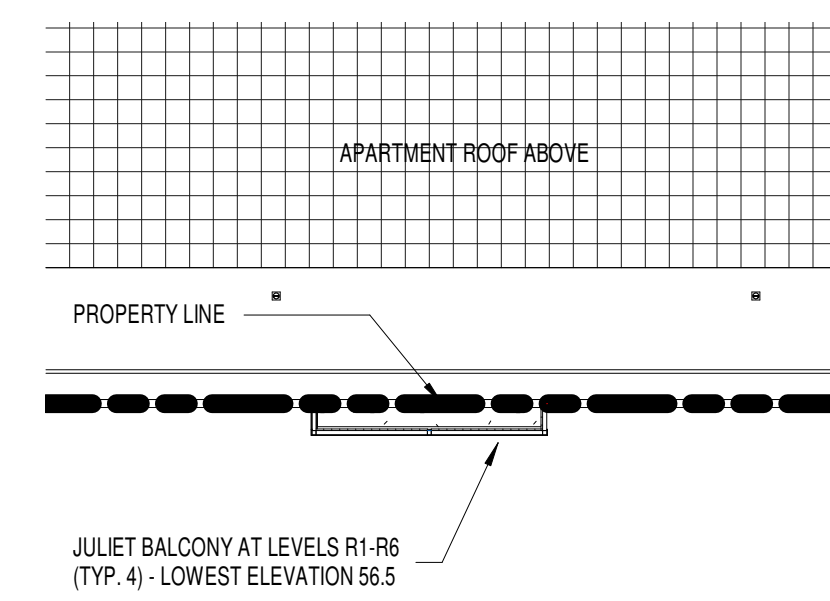
1 ENCROACHMENTS DIAGRAM
SK-14 SCALE: 1" = 30'-0"



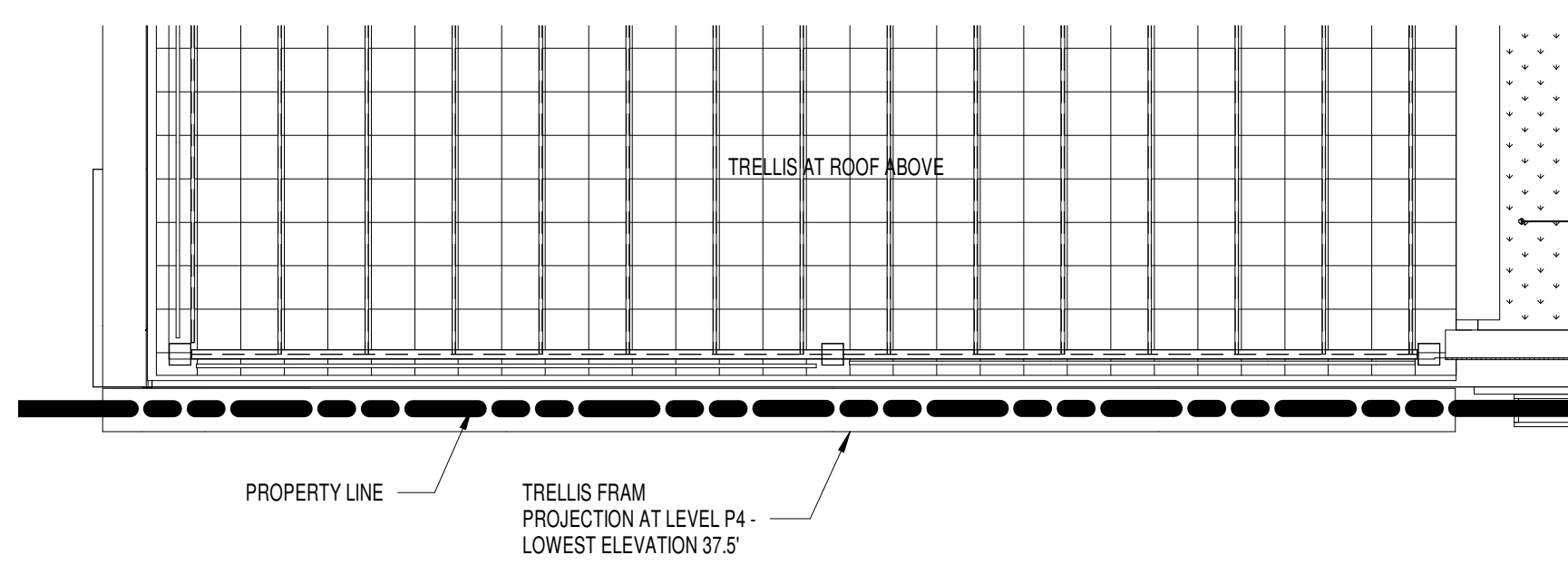
2 ENCROACHMENT - BALCONY
SK-14 SCALE: 1/8" = 1'-0"



3 ENCROACHMENT - WALL PROJECTION
SK-14 SCALE: 1/8" = 1'-0"



4 ENCROACHMENT - JULIET BALCONY
SK-14 SCALE: 1/8" = 1'-0"



5 ENCROACHMENT - PAVILION TRELLIS
SK-14 SCALE: 1/8" = 1'-0"

PROJECT NUMBER: 20160037 PROJECT NAME: HOFFMAN TOWN CENTER BLOCKS 4 AND 5
SHEET NUMBER: SK-14 - ENCROACHMENTS PLAN
P:\2016\20160037\c-7 drawings\d-7-1 revit\users\Retail Base\20160037_2017_retail_base_Goebel02014.rvt
2/4/2019 1:58:56 PM