

RESOLUTION NO. 594

WHEREAS, the City of Alexandria, Virginia, desires to acquire the interest of all parties other than the interest, if any, of the United States of America in 45,000 square feet of land, more or less, located within the City of Alexandria, for park purposes, and the City Council is of the opinion that a public necessity exists for the acquisition of the land within the City of Alexandria hereinafter more particularly described; and

WHEREAS, the land records of the City of Alexandria indicate the owner of the property to be ROBINSON REALTY CORPORATION; and

WHEREAS, the City has made a bona fide effort to purchase the property from the owner thereof, but its efforts have been ineffectual; and

WHEREAS, the City is empowered by Chapter 13 of the City Charter and by the general laws of the Commonwealth of Virginia to acquire private property for public purposes;

NOW, THEREFORE, BE IT RESOLVED BY THE CITY COUNCIL OF
THE CITY OF ALEXANDRIA, VIRGINIA

That pursuant to the provisions of the Charter of the City of Alexandria, Virginia, and the laws of the Commonwealth of Virginia, the City Attorney, or such other attorney as may be retained by the City, is hereby authorized and directed to institute an appropriate condemnation proceeding in the Circuit Court for the City of Alexandria, and take such action as may be necessary to conduct the proceeding to a satisfactory conclusion in order to acquire a valid title in the following described property for park purposes:

DESCRIPTION OF THE LAND REQUIRED FOR
PARK PURPOSES BY THE CITY OF ALEXANDRIA,
VIRGINIA, FROM ROBINSON REALTY CORPORATION

Beginning at the intersection of the bulkhead line and the north side of Prince Street, thence with the side of Prince Street

1) N 81°15'00"W, 242.16 feet to a point of intersection of the east side of a 30' easement (known as the Strand) and the north side of Prince Street; thence continuing with the north side of Prince Street

2) N 81°15'00"W, 30.00 feet to the west side of the Strand, thence with the Strand

3) N 9°30'00"E, 83.28 feet; thence departing from the west side of the Strand and running through the Strand

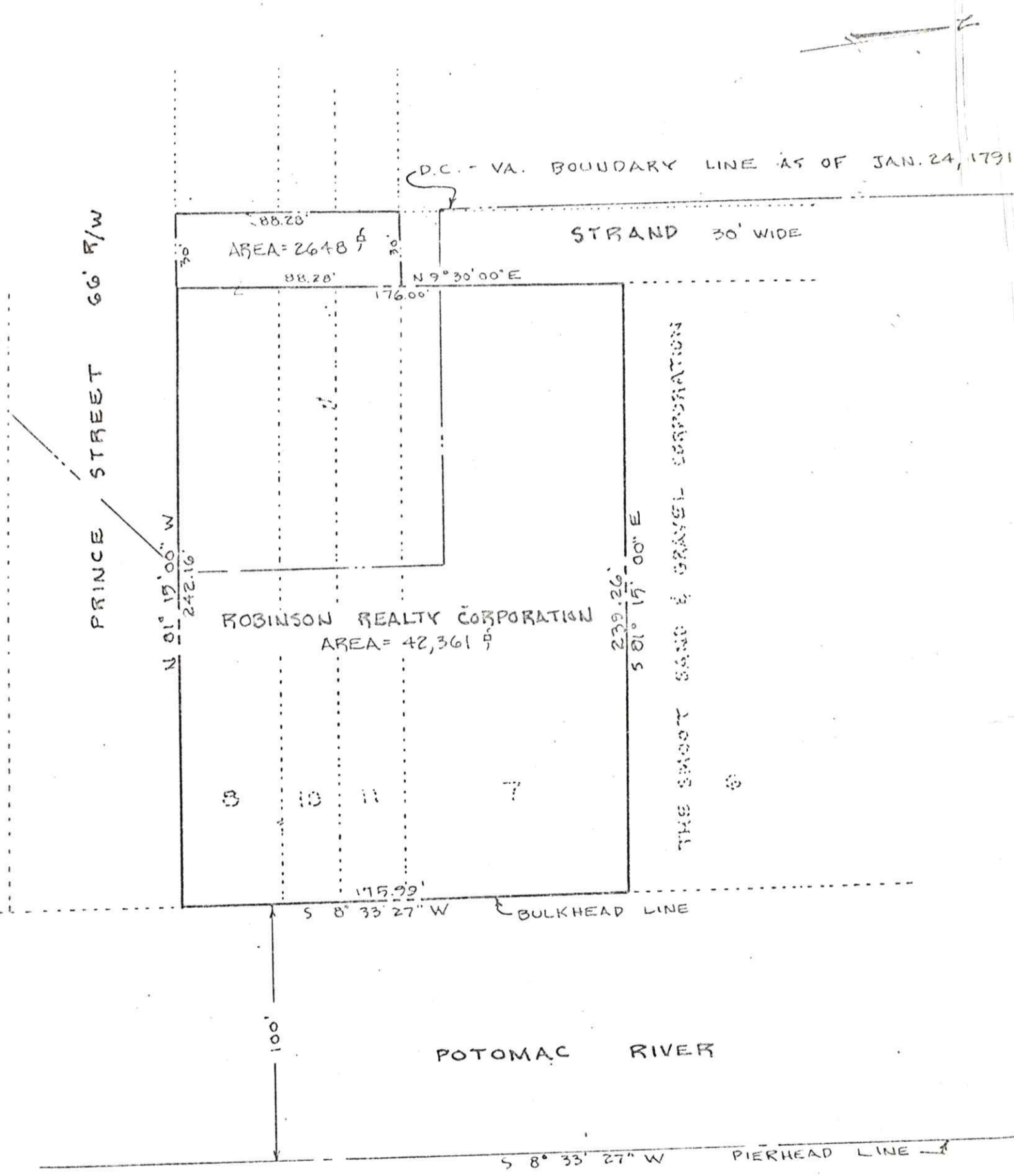
- 4) S 81°15'00"E, 30 feet to the east side of the Strand; thence with the east side of the Strand
- 5) N 9°30'00" E, 87.72 feet to the land of the Smoot Sand and Gravel Corporation; thence with Smoot
- 6) S 81°15'00" E, 239.26 feet to the bulkhead line; thence with the bulkhead line
- 7) S 8°33'27" W, 175.99 feet to the point of beginning and containing a total area of 45,009 square feet, subject, however to existing easements for public utilities.


Adopted June 22, 1976

Helen Holleman, Clerk of the
City of Alexandria, Virginia

NO.	RADIUS	DELTA	TANGENT	ARC	CHORD	CHORD BEARING

CURVE DATA



APPROVED	DIRECTOR, TRANSPORTATION & ENVIRONMENTAL SERVICES, DATE	
	<i>Dayton L. Cook</i> 6/10/76	
	DIRECTOR, PLANNING & COMMUNITY DEVELOPMENT, DATE	
	<i>David Cooper</i> 6/11/76	

PLAT SHOWING THE LAND REQUIRED FOR MUNICIPAL PURPOSES BY THE CITY OF ALEXANDRIA, VIRGINIA FROM **ROBINSON REALTY CORPORATION**

DATE: 6-9-76 SCALE: 1 inch = 50 FT. DRAWN: RC, ELL RECORDED IN D.B. PAGE

DEPARTMENT OF TRANSPORTATION & ENVIRONMENTAL SERVICES
ALEXANDRIA, VIRGINIA